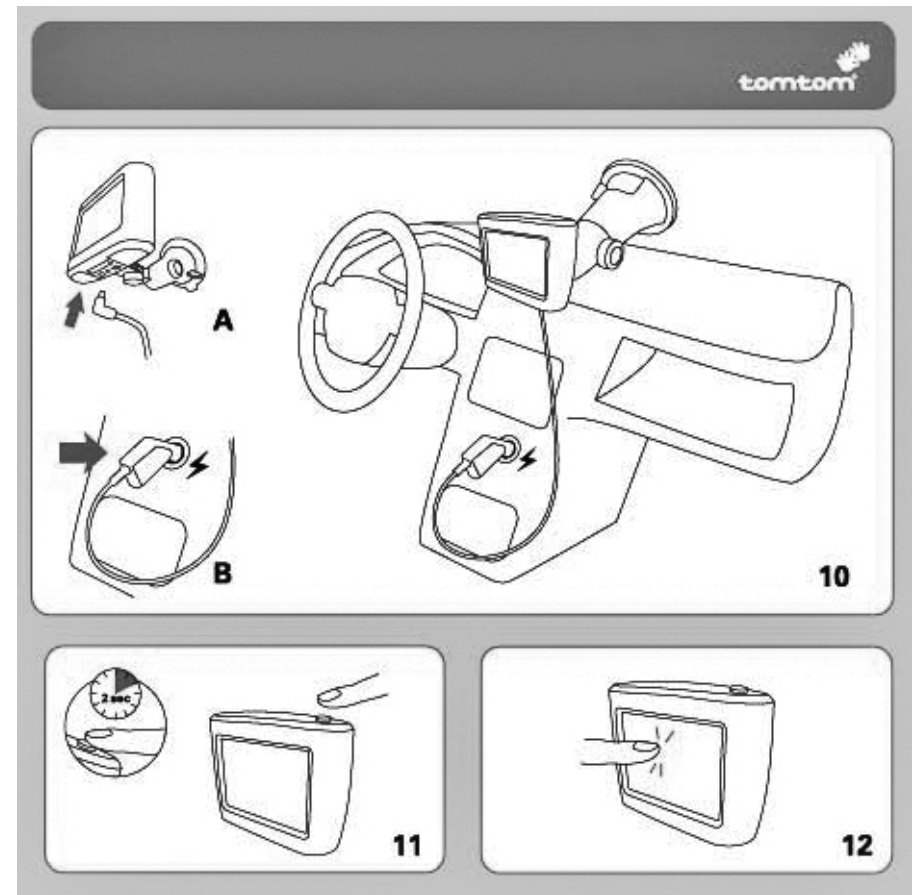


USER GUIDE

1. Press and hold the On/Off button for 2 seconds, or until your device starts. The first time you switch on your device, it may take up to 20 seconds to start.
2. Your device will display the Driving View. The first time you start your device, it can take up to 5 minutes for the device to find your current position. If it takes longer than 5 minutes, make sure that you are in an open place without too many tall buildings or trees around you.
3. Tap the screen somewhere in the middle to bring up the main menu.
4. Tap **Navigate to...**
5. Tap **Address**. Now you have to specify where you want to go. This is done by selecting first the town, then the street and then either the house number or the point where two streets meet.
6. Start to type the name of the town where you want to go. After you have typed a few letters, the names of towns that match what you have typed are shown. When your destination is shown in the list, tap on that name of the town to set the destination.
7. Start to type the name of the street. As with the town, the names of the streets that match what you have typed are shown. When your destination is shown in the list, tap on that name of the street to set the destination.
8. Now do one of the following:
 - Enter the house number of your destination and then tap **Done**.
 - To select a point where two streets meet, tap **Crossing** and select the name of the street as in step 7.
9. The route is calculated by your device. When the route has been calculated, tap **Done**. Your device will immediately start giving you instructions for reaching your destination. To guide you to your destination your device will give you spoken instructions and visual instructions on the screen.



1. Attach the cradle to the windscreen and lock it in place by sliding the lock/release catch round.
2. Make sure the device does not encroach more than 40mm into the swept area of the screen.
3. Plug in the power cable to the device and to the cigarette lighter (see 10A & 10B above).
4. Locate the device in the cable and switch on.
5. **REMOVE IT ALL IF YOU LEAVE YOUR CAR UNATTENDED.**

10. Alternatively if you know the postcode of your destination tap **Navigate to...**
11. Do NOT tap **Address**. Instead tap the **triangle** pointing to the right and then tap **Postcode** and enter the full postcode. After you have typed a few characters, the areas that match what you have typed are shown. When your destination is shown in the list, tap on **Done** to set the destination.
12. Enter the house number of your destination and then tap **Done**. See step 9.
13. Finally, we have also programmed into the device a number of Points of Interest (POI). If you would like to visit one of those destinations tap **Navigate to...**
14. Do NOT tap **Address**. Instead tap **Point of Interest**.
15. You will see a number of different categories labelled **Petrol Station, Open Parking, Restaurant, Beach** and others. You should see one labelled **Satnav2go**. If you do not see it, tap the **triangle** pointing to the right until you do.
16. You will now see a list of **addresses** and two **triangles** on the right of the screen, a grey one pointing up and a white one pointing down. If the address you would like to visit is displayed tap on that **address**. See step 9.
17. If you do not see your destination on the screen tap on the white **triangle** pointing down and the list will scroll up until the **triangle** pointing down turns grey. When you see your destination tap on that address. See step 9.
18. We have also programmed the device with the Hotel as **Home**. If you would like to get back to the hotel tap **Navigate to...**
19. Do NOT tap **Address**. Instead tap **Home** and on the next display tap **Done**.
20. To switch off your device, press and hold the On/Off button for 2 seconds.